

E-ARK General Model

Future Directions

Towards a Pan-European eArchiving Process Repository

DLM Forum Triennial, Brighton

15th September 2017

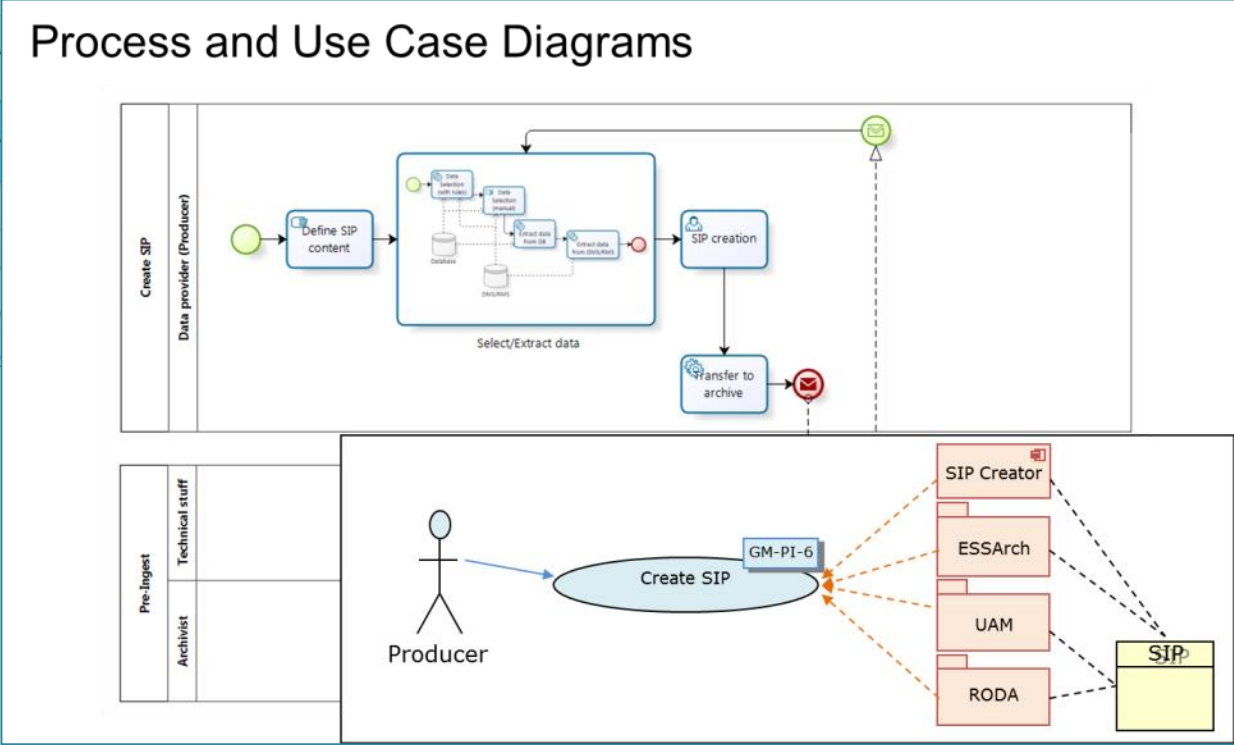
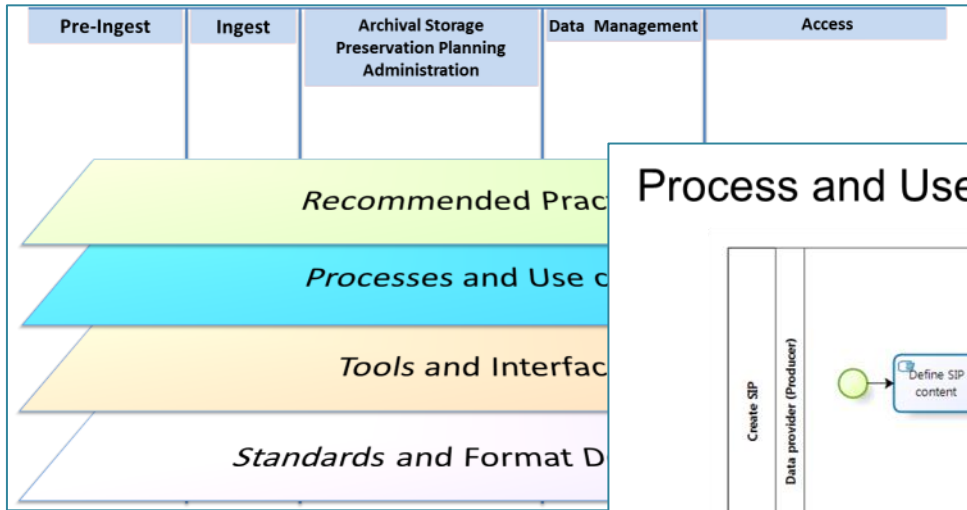
István Alföldi

NAH, Poliphon

alfi@poliphon.hu



General Model 1.0



E-ARK
General Model 1.0

E-ARK
General Model 2.0

2014

2015

2016

2017

2018

E-ARK Project

eArchiving CEF BB?

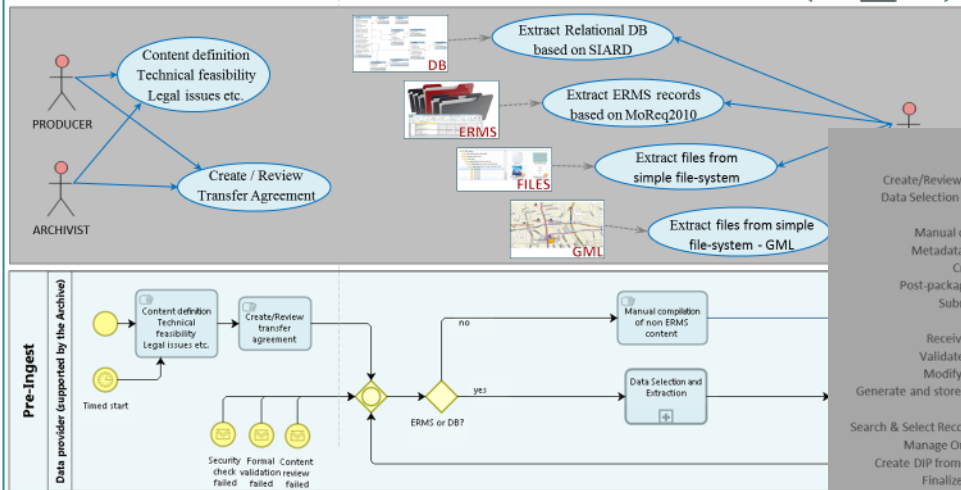
Use cases and Processes

E-ARK
General Model
v2.3

General Reference

Format Specifications

Pre-Ingest Use cases



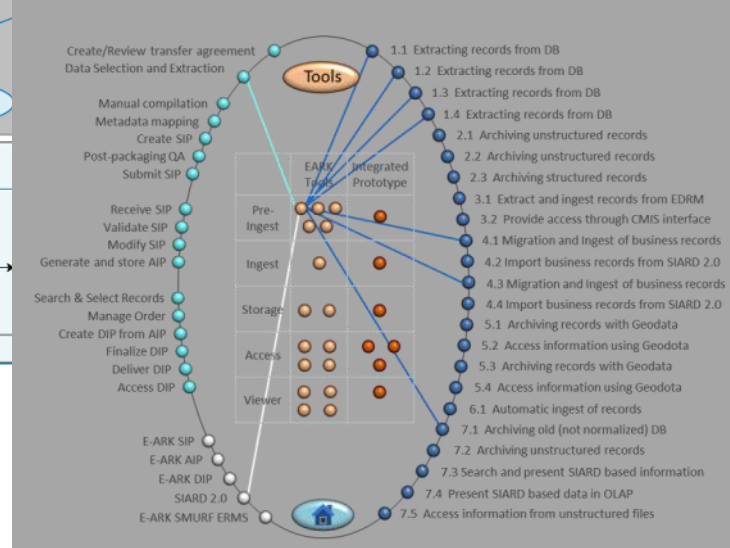
Pre-ingest
Data provider (supported by the Archive)

Database Preservation Toolkit

The Database Preservation Toolkit allows conversion between Database formats, including connection to live systems, for purposes of digitally preserving databases. The toolkit allows conversion of live or backed-up databases into preservation formats such as SIARD, a XML-based format created for the purpose of database preservation.

Developer: KEEP Solutions

[Web site](#)
[User Manual](#)
[Documentation](#)



E-ARK
General Model 1.0

E-ARK
General Model 2.0

E-ARK
General Model 3.0

2014

2015

2016

2017

2018

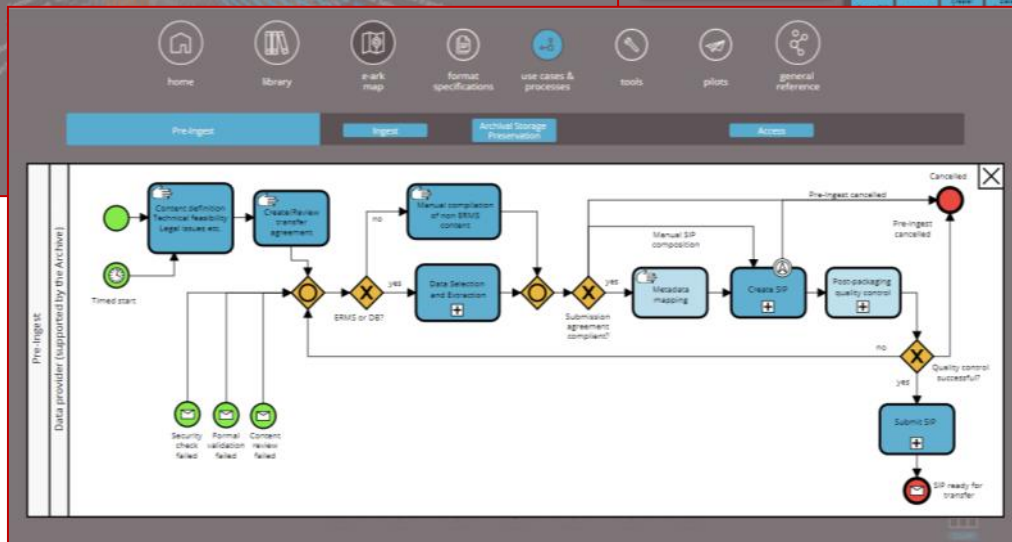


E-ARK Project

eArchiving CEF BB?



General Model 3.0



E-ARK
General Model 1.0

E-ARK
General Model 2.0

E-ARK
General Model 3.0

2014

2015

2016

2017

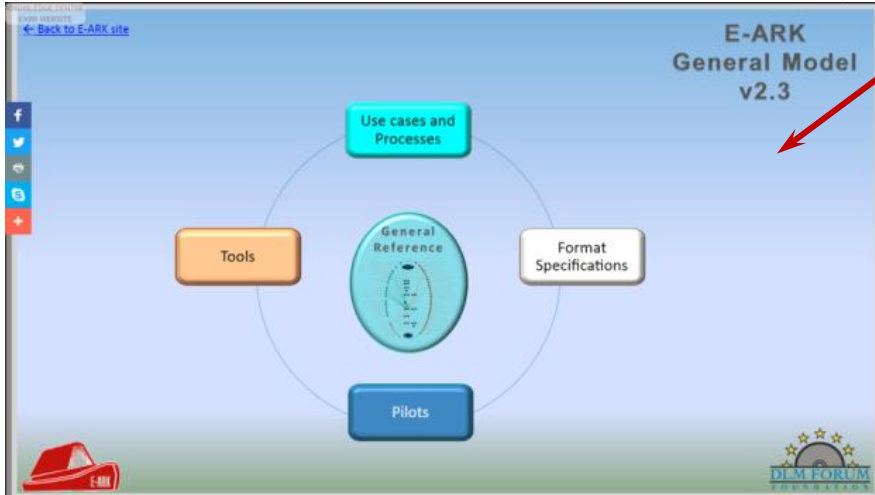
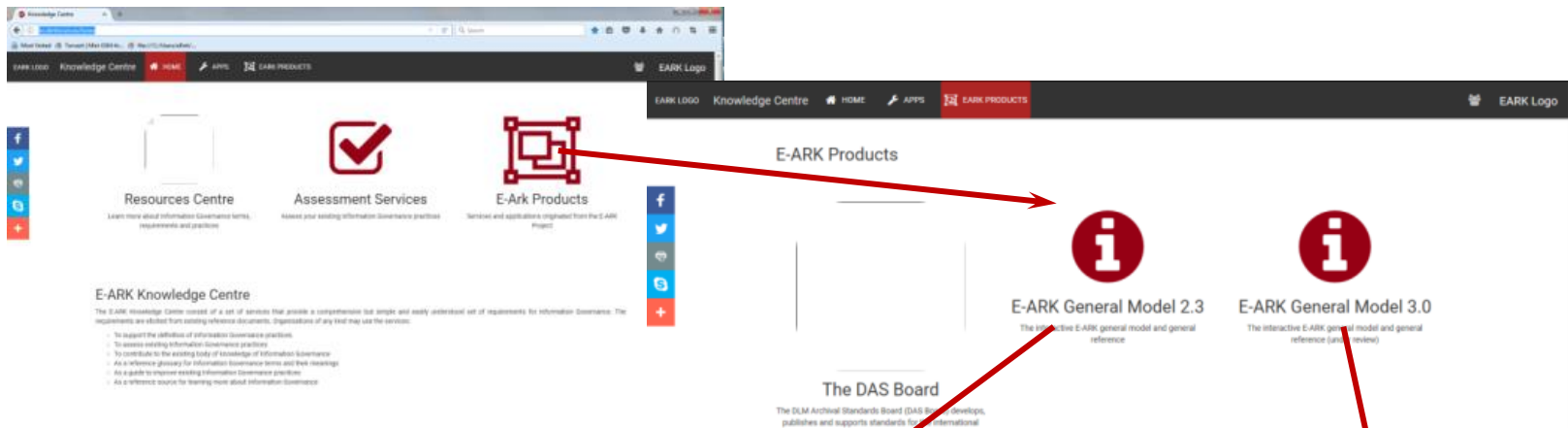
2018



E-ARK Project

eArchiving CEF BB?

[DLM Forum – Knowledge Center \(kc.dlmforum.eu\)](http://kc.dlmforum.eu)



2014

2015

2016

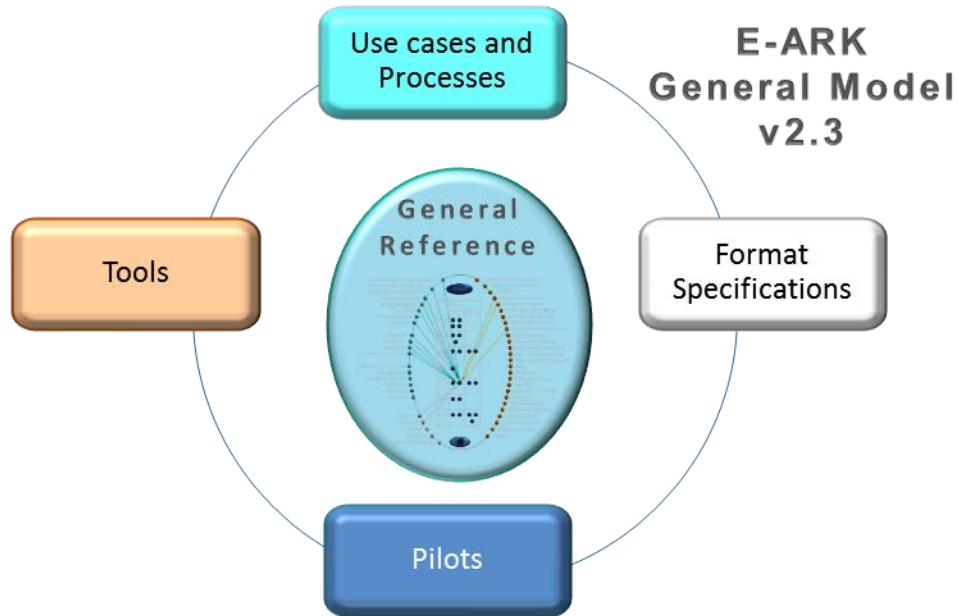
2017

2018



E-ARK Project

eArchiving CEF BB?



2014

2015

2016

2017

2018

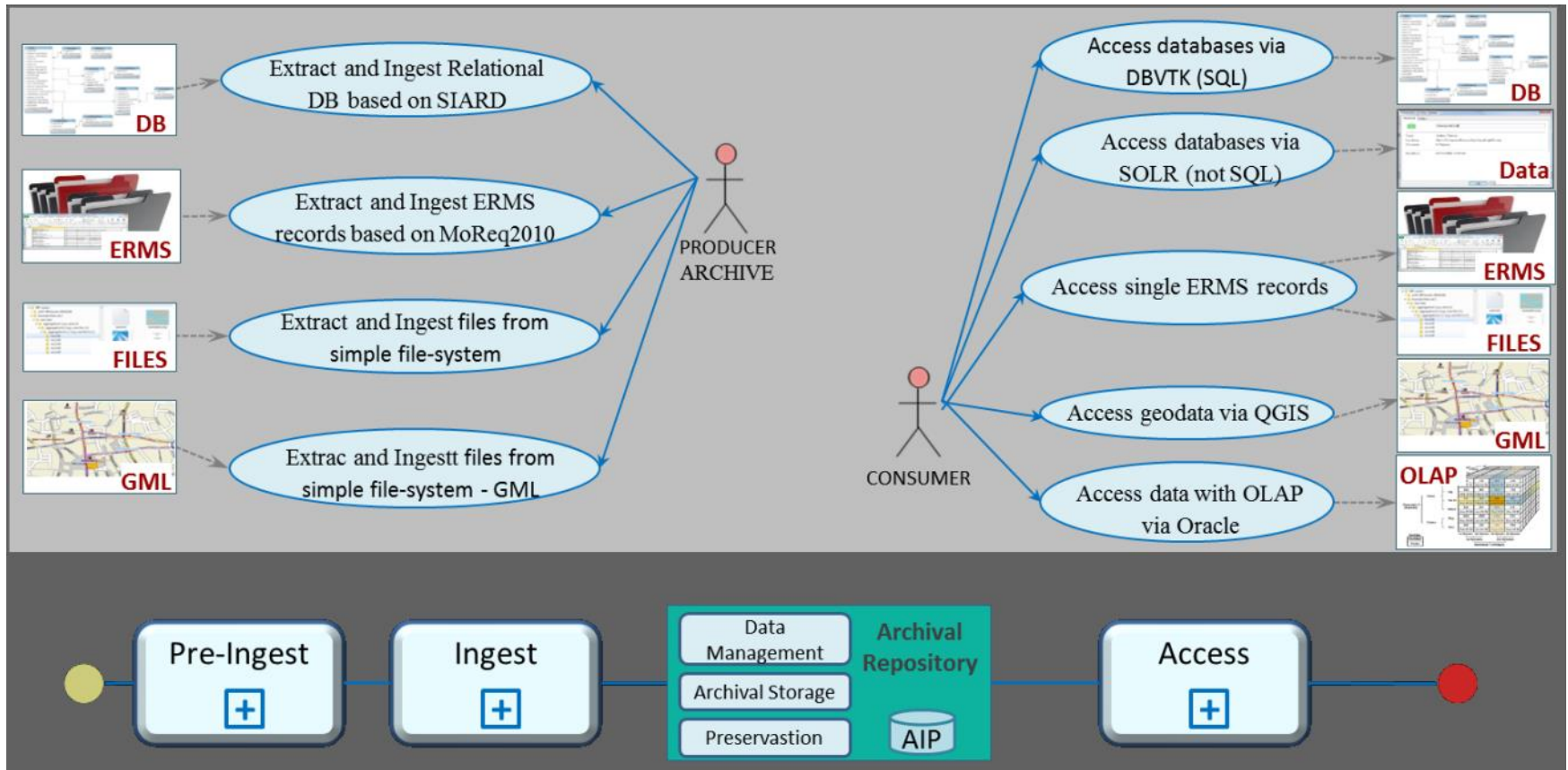


E-ARK Project

eArchiving CEF BB?

Use-case and process model practically frozen

➤ Extended scope



2014

2015

2016

2017

2018

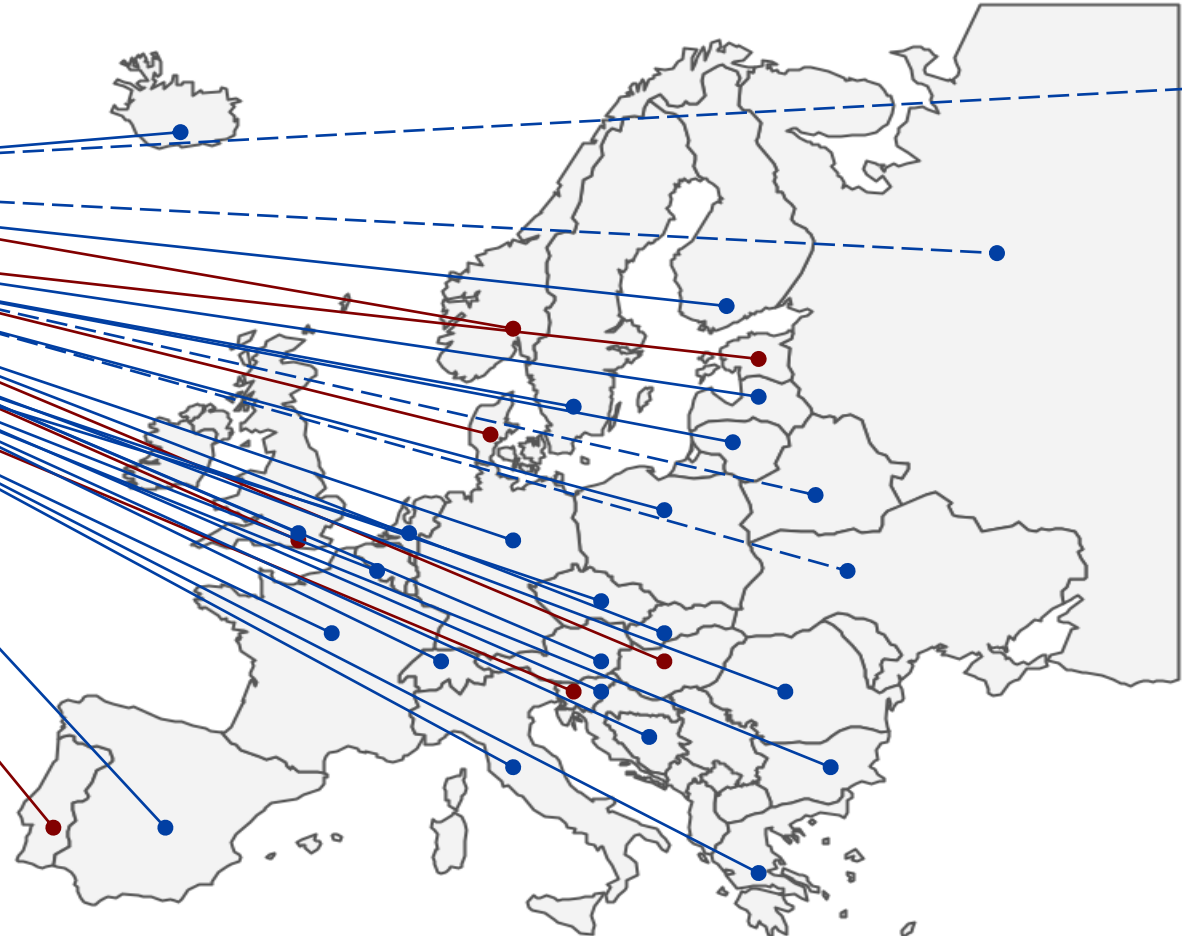


E-ARK Project

eArchiving CEF BB?



➤ Extended audience



2014

2015

2016

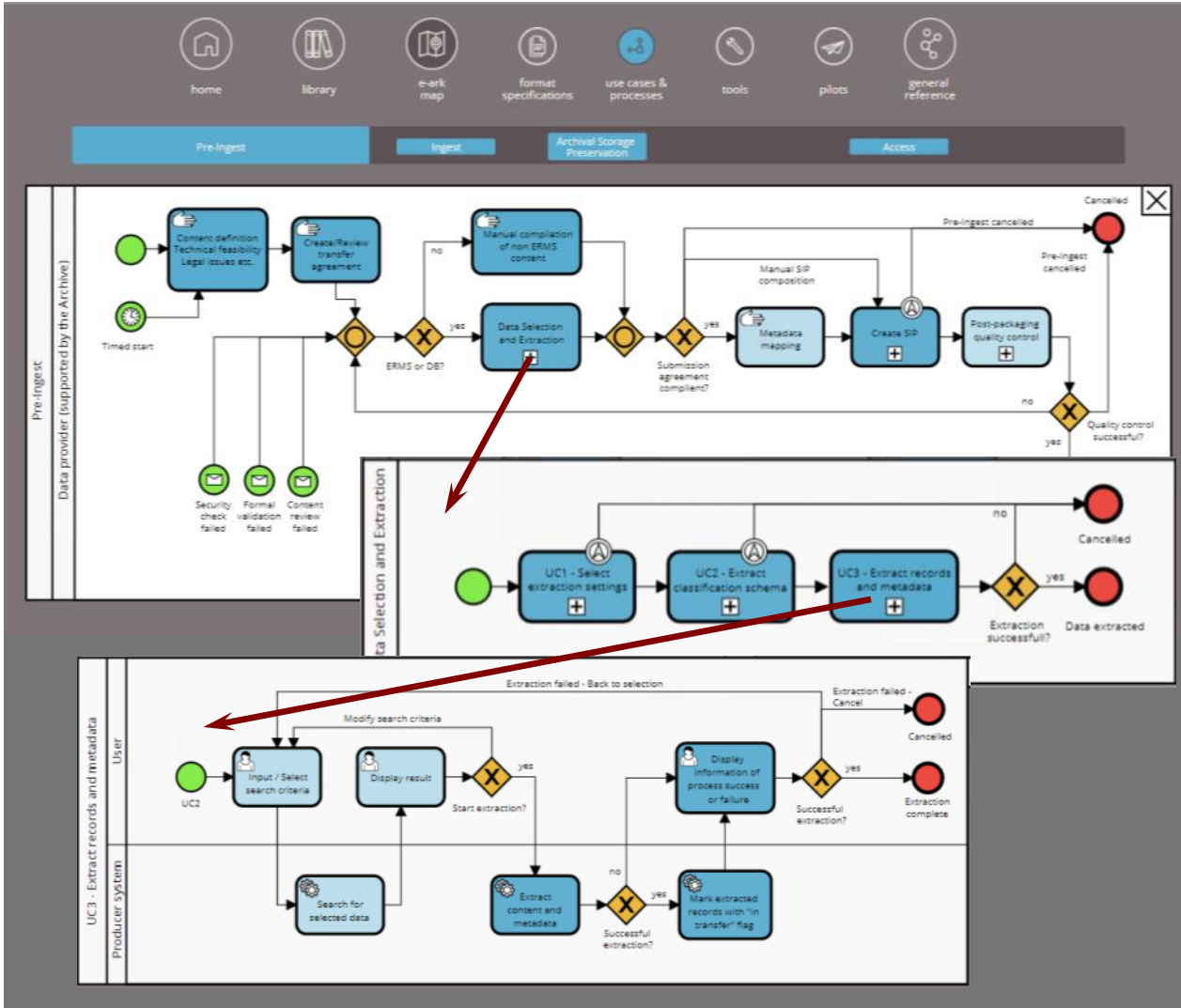
2017

2018



E-ARK Project

eArchiving CEF BB?



➤ Extended objective

2014

2015

2016

2017

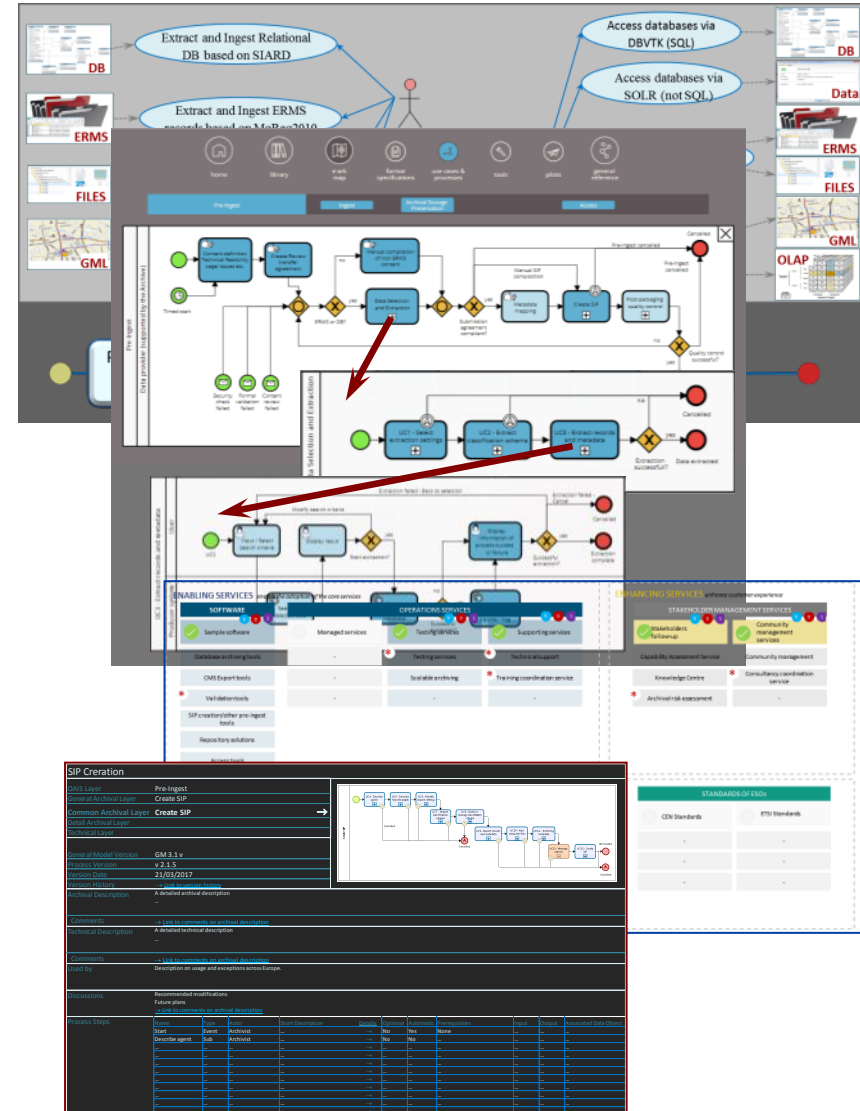
2018

E-ARK Project

eArchiving CEF BB?

Possible future directions

- Extend the supported high-level use-case and process portfolio
- Rethink process layering
 - New „Common archival layer“
- Mapping process steps to existing and future tools
 - Creating process related requirements for tool developers
- Mapping the use-case and process model to the new service model
 - Approaching a Pan-European eArchiving Process Repository
 - Creating and piloting a self-assessment methodology



E-ARK
General Model 1.0

E-ARK
General Model 2.0

E-ARK
General Model 3.0

eArchiving
Process Repository

2014

2015

2016

2017

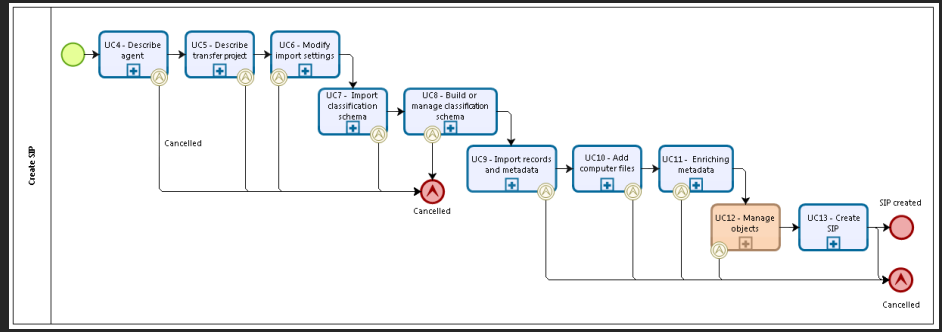
2018

E-ARK Project

eArchiving CEF BB?

SIP Creation

OAIS Layer	Pre-Ingest
General Archival Layer	Create SIP
Common Archival Layer	Create SIP
Detail Archival Layer	
Technical Layer	
General Model Version	GM 3.1 v
Process Version	v 2.1.5
Version Date	21/03/2017
Version History	→ Link to version history



Archival Description
A detailed archival description
...

Comments
[→ Link to comments on archival description](#)

Technical Description
A detailed technical description
...

Comments
[→ Link to comments on archival description](#)

Used by
Description on usage and exceptions across Europe.

Discussions
Recommended modifications
Future plans
[→ Link to comments on archival description](#)

Process Steps	Name	Type	Actor	Short Description	Details	Optional	Automatic	Prerequisites	Input	Output	Associated Data Object
	Start	Event	Archivist	...	→	No	Yes	None
	Describe agent	Sub	Archivist	...	→	No	No
	→
	→
	→



SIP Creation

Draft SIP
 Create SIP
 Create SIP

Common Archival Layer Create SIP
Draft Archival Layer Create SIP
Technical Layer Create SIP

General Model Version GM 3.1 v
Previous Version v 2.1.5
Version Date 21/03/2017
Version History [View version history](#)
Version Description A detailed archival description

Comments [View comments and related documents](#)
Archival description A detailed archival description
Comments [View comments and related documents](#)
Used by [Description on usage and exceptions across Europe](#)

Procedures [View procedures on archival description](#)
Future plans [View future plans on archival description](#)

Process Step	Date	Start	Archivist	Discrete agent	Archival	Agency	Agency	Agency	Agency	Agency	Agency	Agency	Agency	Agency	Agency	Agency	Agency	Agency

